



Who is the Whānau Group?

The Whānau group is made up of parents, teachers and kaumatua who provide consultation and education for Pirongia School to uphold, enhance and support Te Ao Māori.

What is Te Ao Māori?

Te Ao Māori literally means “The Maori World”. It encompasses language, cultural practices, marae, wāhi tapu (*sacred places*), and access to whānau (*extended family*), hapū (*sub-tribes/small communities*) and iwi (*tribes/larger communities*).

[For further information see:

http://en.wikipedia.org/wiki/Te_Ao_Māori]

Why does the School need to have a focus on Te Ao Māori?

In 2010/11 the Ministry of Education “produced a Treaty of Waitangi policy statement to guide every decision [they] make, ensuring it contributes towards making a positive difference for and with Māori learners. [They] expect [their] staff to be well informed, innovative and resolute about considering the Treaty of Waitangi in all business matters. Putting the Treaty at the forefront of [the Ministry’s] work continues to be a major challenge and is a vital key to getting the necessary system shift in performance”.

<http://www.minedu.govt.nz> – Māori achieving education success as Māori). This is also evidenced in the Ministry of Education’s *Māori Education Strategy – Ka Hikitia*, a document that guides educational practice for Māori and Pasifika students (Ministry of Education, 2013).

By making this a *living* document in our school, we have found that we are able to foster *all* students to learn and grow with a strong cultural identity, not just Māori students.



What does the Whānau Group do?

- Supports the bicultural focus of the school to uphold the Ministry of Education’s commitment to Te Tiriti o Waitangi and the *Ka Hikitia* Strategy
- Ensures effective and fun learning tools that assist in meeting specific learning needs for Māori students, and enriching cultural experiences for all students, in order to raise student achievement as outlined by the Ministry of Education

Fostering all students to learn and grow with a strong cultural identity

- Provides consultation to the school to ensure that our tamariki (children) have genuine culturally appropriate experiences.

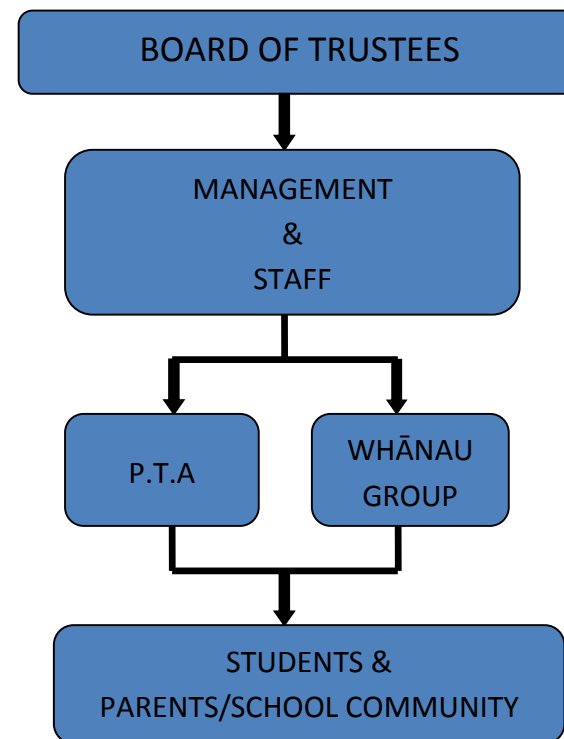
Tamariki participate in these experiences through –

- Kapahaka
- Learning Te Reo Māori
- Matariki (Māori New Year) Celebrations
- Powhiri (Welcome ceremonies)
- Manaakitanga (Host responsibility)
- Te Wiki o te Reo Māori (Māori language week)
- Tuakana-Teina based learning (Older learners assisting younger learners)
- Ako (reciprocal learning)
- Māori leadership opportunities
- Tiakitanga (Caring for others)

- Provides a support network for whānau within our school community.



Where does the Whānau Group fit within the Management structure of the School?



Who can join the Whānau Group and when do they meet?

The Whānau group is open to all families within our school community. If you would like to learn more about our kaupapa (purpose) and our role, please feel free to join us. We meet on a monthly basis.

See the school newsletter for meeting dates and upcoming events.



A wholistic approach to cultural well-being and academic learning

The Whānau group assists the school in taking a wholistic approach to cultural well-being and academic learning in general. This approach follows Sir Mason Durie's 'Whare Tapa Wha' (Four Sides of the House) model of well-being; an approach that caters for *Family and Community well-being, Spiritual well-being, Physical well-being; and Mental and Emotional well-being*. It also considers how connection to one's home land or roots assists in healthy development for individuals.

Research shows that when Māori students are grounded in their identity they are more likely to be successful in their education (Macfarlane, Glynn, Cavanagh & Bateman, 2007). This also appears to be true for all indigenous cultures and for learners generally.



See examples of this model of well-being in action by visiting the 'Māori Culture' page on our website: <http://www.pirongia.school.nz/NewFiles/maori.html>



For Further Information Contact:

The Office
Pirongia School
100 Beechey Street
Pirongia

Phone: 07-871 9727

References:

Macfarlane, A., Glynn, T., Cavanagh, T. & Bateman, S. (2007). Creating Culturally-Safe Schools for Māori Students. *Australian Journal of Indigenous Education*. Vol. 36, pp. 65-76.

Ministry of Education. (2011). *Annual report 2011*. Wellington: Ministry of Education.

Ministry of Education. (2013). *Ka Hikitia: Accelerating Success 2013-2017: Māori Education Strategy*. Wellington: Ministry of Education.

Wikipedia. (2012). *Te Ao Māori*. http://en.wikipedia.org/wiki/Te_Ao_Māori



Pikia tō tātou Maunga

PIRONGIA SCHOOL

MĀORI WHĀNAU

GROUP

Promoting Kotahitanga
(Unity)

and

Mahi Tahī
(Working together)

